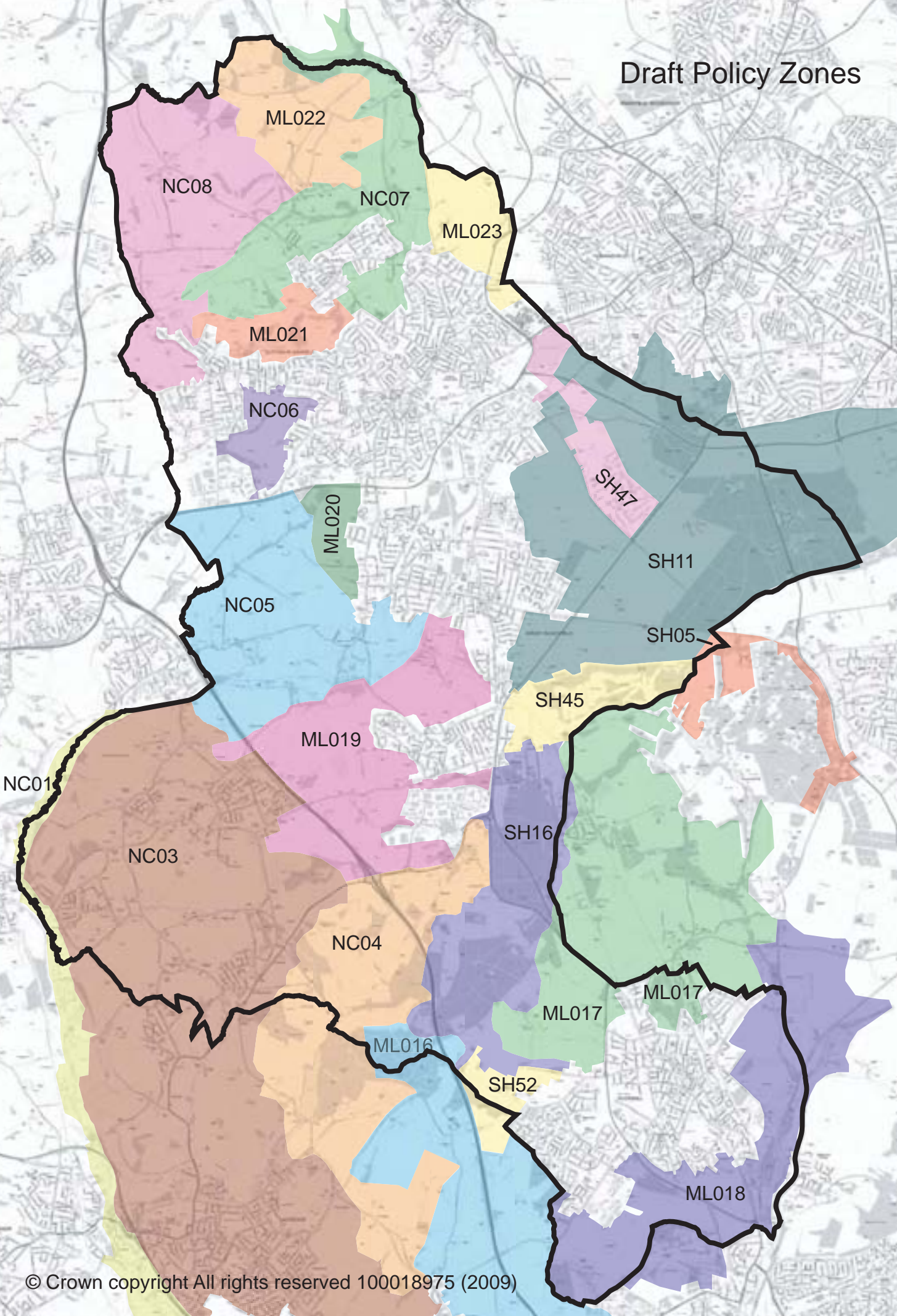
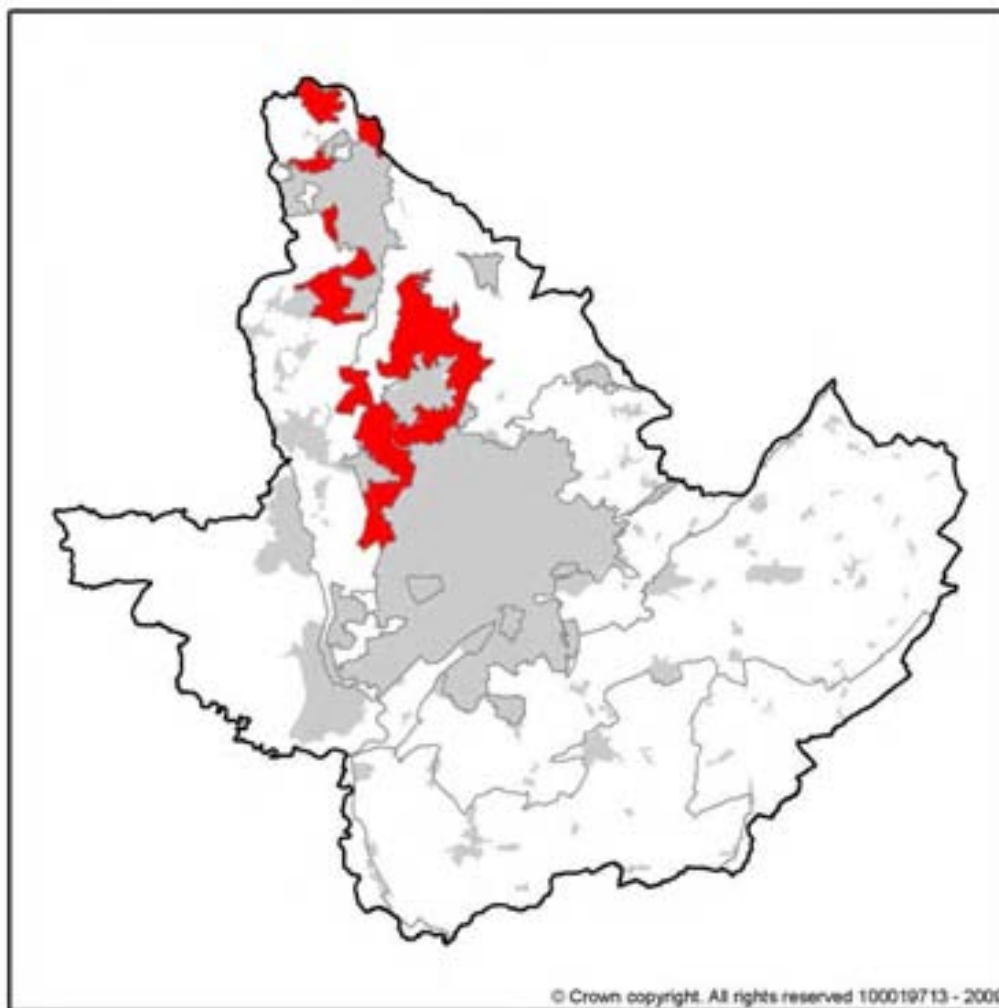


Draft Policy Zones



MAGNESIAN LIMESTONE RIDGE



DPZ within this Regional Character Area:

- ML015** **Strelley Plateau**
 - ML016** **Nuthall Wooded Farmland**
 - ML017** **Linby Wooded Farmland**
 - ML018** **River Leen Corridor**
 - ML019** **Kirby Quarry, Portland Park and Rise Hill**
 - ML020** **Kirby Plateau**
 - ML021** **Brierley Forest Park**
 - ML022** **Sutton Plateau**
 - ML023** **Skegby Upland Plateau**
-

MAGNESIAN LIMESTONE RIDGE

Key Characteristics

- Narrow limestone ridge never more than a few miles wide extending from Nottingham toward Ripon in Yorkshire;
 - Narrow belt of Permian rocks comprising two divisions,; the Magnesian Limestone and Permian Marl;
 - The hard Magnesian limestone determines the distinctive landform whilst areas of softer marl (predominately red clays) have a more subdued relief;
 - Low escarpment dipping gently eastwards under overlying Triassic sandstones, whilst the western slope is defined by a steep irregular profiled scarp slope (profile caused by small streams);
 - Productive free draining calcareous soils developed on limestone and less productive soils on Permian Marl which often are subject to waterlogging;
 - In the north, pronounced dip slope which forms a series of rolling summits the highest being 200mAOD at Huthwaite; to the south where limestone is thinner the relief is less pronounced;
 - Deep valleys present along western slopes where streams have cut into the underlying coal measures;
 - Coalfield influences are evident with large mining settlements and associated restored pit heaps;
 - Regular dispersal of large estates, enclosed commons and small rural villages often containing locally distinctive limestone buildings;
 - Modern settlements contain older stone centres, red brick terraces and newer suburban development;
 - Distinctive villages such as Linby, Papplewick and Teversal using local pinkish-yellow limestone in building construction;
 - Well-defined pattern of hedged fields and large estate woodlands;
 - Regular pattern of medium to large scale fields mostly used for intensive arable farming;
 - Hedgerows are the common field boundary although stone walls are present on higher land;
 - Small pockets of surviving unenclosed commons and older enclosure smaller semi-regular fields is evident around villages;
 - On lower lying land a strong sense of enclosure and seclusion is created through the combination of woodland, coverts, parkland and tree belts and a lack of public access;
 - On higher land there are extensive views towards the Derbyshire Coalfield; and
 - In places the land is less enclosed by trees and landform and is more open in character; in contrast around Annesley Woodhouse woodland is more prominent and provides a strong sense of enclosure.
-

Guidelines and Recommendations

- Conserve the nucleated pattern of rural settlements and ensure new buildings reflect the local vernacular;
 - Conserve the internal open space, such as village greens, gardens and paddocks and irregular outline of villages;
 - Conserve the frequency and character of farmsteads within settlements;
 - Conserve and strengthen the traditional pattern of hedged fields;
 - Identify opportunities for enhancing ecological diversity;
 - Initiate schemes for large-scale woodland planting to contain and soften urban development;
 - Conserve and restore the integrity of historic estate lands;
 - Restore the special character of the alluvial grasslands;
 - Conserve river valley woodlands and encourage the creation of new woodland;
 - Retain and enhance the diversity of the river channel and bankside vegetation;
 - Promote riverside tree planting to strengthen the continuity of the river corridors;
 - Conserve all ancient woodland sites; and
 - Conserve the pastoral character of meadows along the river banks.
-

ML021 Brierley Forest Park



CONTEXT

Regional Character Area: Magnesian Limestone Ridge
LDU Reference: 278
DPZ Reference: ML021



CHARACTERISTIC FEATURES

- Prominent man-made landform of a restored former colliery comprising a raised woodland covered mound comprising 'engineered' slopes of even gradient
- The landscape is primarily for recreation on the urban fringes of Sutton in Ashfield. Large areas of immature woodland plantation and grassland are prominent although urban elements are generally visible in the many views from the park
- Brierley Waters, a large man-made pool is a localised feature at the base of the southern slopes of the mound
- Land use is a mixture of woodland plantation and grassland
- Woodland comprises predominantly broadleaf species typically arranged in blocks and with trees in grid pattern. Woodland is interspersed with a series of public footpaths and open grassland
- Field pattern is largely absent in this landscape having been removed during its mining past
- Remnant field boundary hedges are occasionally present notably at the northern park perimeters
- Prominent extensive woodland plantation covers the slopes of mounded high ground
- Rides and surfaced paths up to a high point and viewing area at the top of the hill
- Tracks enclosed by woodland
- Woodland cover will increase as it matures and will create a more heavily wood landscape
- Largely enclosed by the urban areas of Sutton in Ashfield, Huthwaite and Stanton Hill
- One distinctive red brick former factory building and the roofline of houses on the edge of Sutton at the southern edge of the character area are prominent on raised ground
- Views enclosed by woodland on low ground with panoramic views from the top of the colliery mound across urban areas to the south and to the north open countryside and high ground at the former Silver Hill colliery to the north
- The park contains a visitor centre and car parking. There are several incidental art installations throughout the park together with furniture and interpretation signage
- Other recreational land use includes a golf course north of Brierley Forest Park which is characterised by highly managed linear woodland



LANDSCAPE ANALYSIS

Condition

This character area is a restored landscape which is heavily influenced by man. It covers the site of the former Sutton colliery and Brierley spoil tip. It is a relatively small area which is associated with recreation. Brierley Hill Park covers approximately 250 acres and forms the majority of this character area. The park also comprises Greenwood Community Forest which is within the park and a golf course to the northwest. Land within the park is typically sloping. Rising land culminates at a high point and with pockets of rough grassland, wild flora meadows and substantial blocks of developing plantation woodland.

The historical field pattern has largely been lost due to mining activity although some remnant hedgerows and lanes are evident at Rooley Lane and at the edges of the DPZ. Mostly land is open between woodland blocks. The adjacent land to the northwest is a golf course and laid to greens and fairways which are interspersed with woodland blocks and hedgerows but these do not follow historic field patterns.

The landscape condition is **MODERATE**. This is a designed landscape which brings disused industrial land back into use for recreation. Hedgerows, grassland and woodland areas are well managed for recreation and nature conservation. This is a relatively modern landscape where no legible field pattern is notable. The prominent landscape features present, are predominantly man-made and recent in origin.



Landscape Strength

The former colliery spoil mound is a significant landscape feature visible over long distances particularly from the northwest. Views are typically over long distances from the high ground although more enclosed by woodland on lower ground. Urban elements are frequent in views in other directions as the character area is bounded by built development on three sides by the Sutton in Ashfield, Stanton Hill and Huthwaite. The roofline of housing at the northern fringes of Sutton is on raised ground overlooking Brierley Hill Park and is prominent on the sky line. From the top of the spoil mound panoramic views are possible and overlook the adjacent character areas the north; the lower-lying River Meden valley; and Stanley undulating farmland.

The strength of character of the area is **MODERATE**. This DPZ is distinctive as a modern designed recreational landscape. The new woodland covered former spoil tip is a prominent feature within the surrounding area forming a backdrop to views. The hills and woodland blocks interspersed with grassland are distinctive and provide a sense of place although around the golf course, this is slightly weaker.

	MODERATE <i>Enhance</i>	MODERATE - GOOD <i>Conserve and Enhance</i>	GOOD <i>Conserve</i>
Good			
Moderate	POOR - MODERATE <i>Enhance and Restore</i>	MODERATE <i>Enhance</i>	MODERATE - GOOD <i>Conserve and Enhance</i>
Poor			
	POOR <i>Restore/Create</i>	POOR - MODERATE <i>Enhance and Restore</i>	MODERATE <i>Enhance</i>
	Weak	Moderate	Strong
	Landscape strength		

The overall landscape strategy is **ENHANCE**.

LANDSCAPE ACTIONS

- Landscape features*
 - Enhance and manage large blocks of developing woodland as they will contribute to a wooded landscape character in the future
 - Conserve old remnant hedges and where possible create links to new woodland
 - Conserve and enhance the diversity of species within large-scale woodland plantations; new planting should also have a range of species in its mix
 - Conserve the network of rides and paths through the DPZ
 - Enhance new woodland by careful management, selectively thinning trees and groups to encourage a natural appearance
 - Conserve remnant hedgerows and encourage infill planting within gaps rather than erection of timber fencing
 - Conserve areas of rough grassland and encourage future management for amenity and species diversity
- Built form*
 - Conserve views out to focal buildings through management of vegetation along boundaries
 - Conserve the naturalistic, low key character of Brierley Forest Park Visitor Centre and car parking, and ensure this is continued to any future expansion
- Other development/ structures in the landscape*
 - Conserve and enhance art installations and interpretation within public open spaces
 - Conserve land within this area for primarily leisure and recreational use
 - Conserve and enhance the wooded boundaries adjacent to the urban fringes to screen them from the DPZ.